



ELEVATION. 3



ELEVATION. 1



ELEVATION. 2

# RIVIERA 1

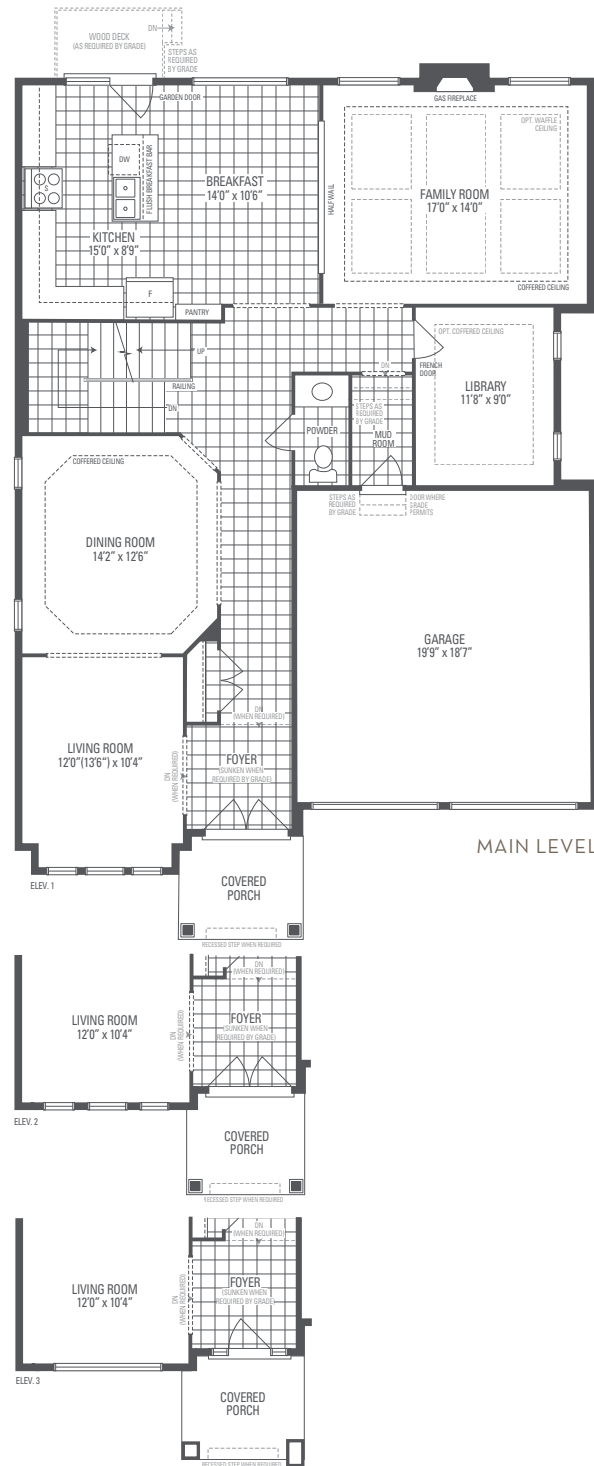
Elevation 1 • 3,344 sq.ft. | Elevation 2 • 3,328 sq.ft. | Elevation 3 • 3,326 sq.ft.

Main exterior building materials for front include: Elev. 1 • Cultured Stone + Brick, Elev. 2 • Cultured Stone + Brick, Elev. 3 • Cultured Stone + Brick + Prefinished Aluminum Siding  
 Tinor Development Corp. • 45' • February 2024

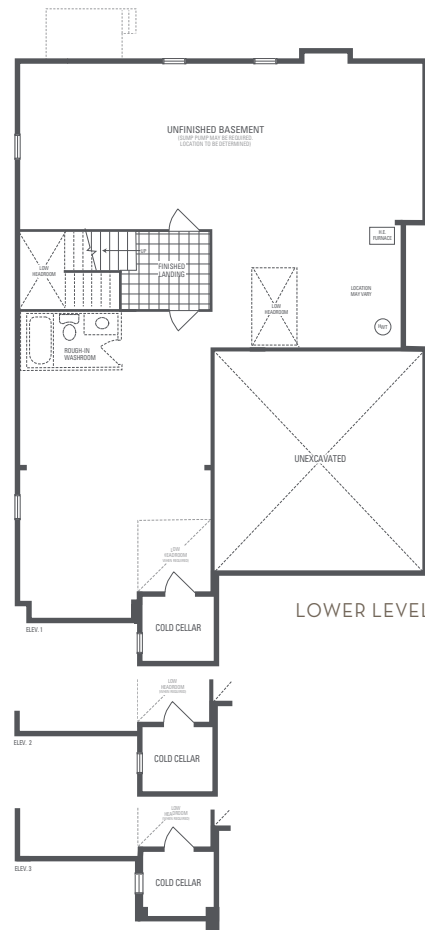
NOTE: Orientation of home may be reversed and purchaser agrees to accept the same. Unit setback and roofline may vary due to siting. Steps may vary at any exterior entrance ways due to grading variance. All dimensions are approximate only and subject to change without notice. Actual usable floor space may vary from stated floor area. All renderings are artist's concept, specifications, architectural and mechanical detailing are subject to minor modifications. Mechanical wall encroachments may be required into finished rooms and garage spaces. E.&O.E.

# RIVIERA 1

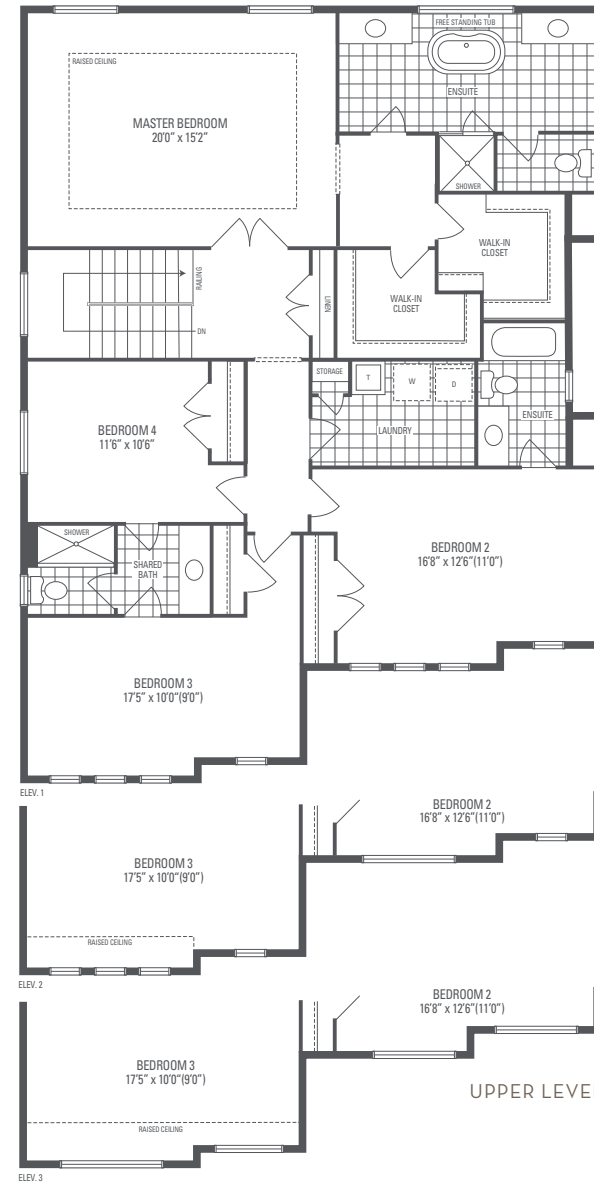
Elevation 1 • 3,344 sq.ft. | Elevation 2 • 3,328 sq.ft. | Elevation 3 • 3,326 sq.ft.  
(Add 65 sq.ft. of Finished Basement Landing)



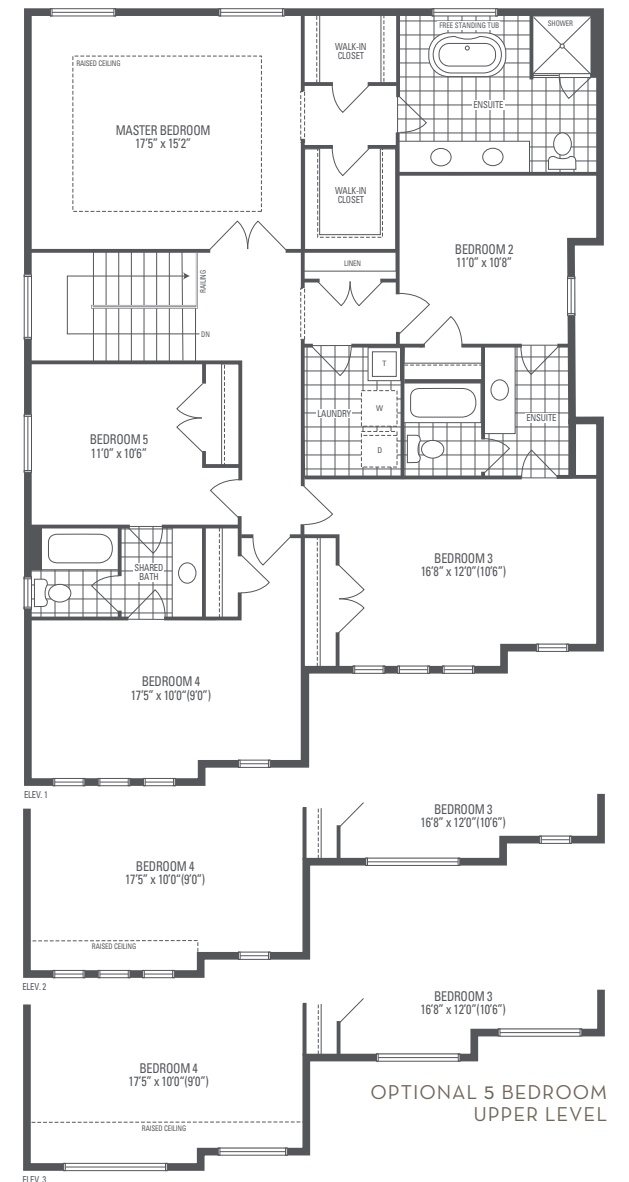
MAIN LEVEL



LOWER LEVEL



UPPER LEVEL



OPTIONAL 5 BEDROOM UPPER LEVEL